

Empowering

NEXT GENERATION ENGINEERS

ASME'S PHILANTHROPIC
PROGRAMS

ASME
FOUNDATION



WE BELIEVE

the future depends on

SUSTAINABILITY

diversity drives

INNOVATION

engineering should benefit

EVERY HUMAN BEING

WE ARE THE
ASME FOUNDATION

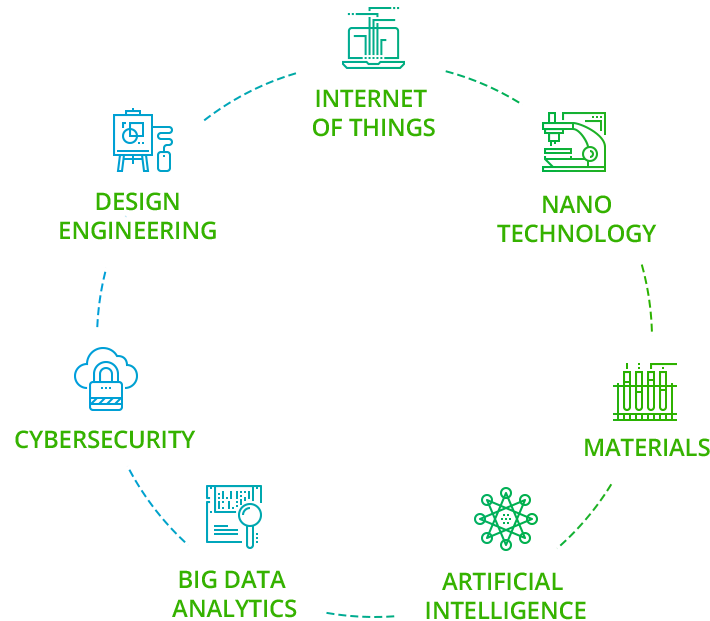


*The premier global organization
for engineering professionals*

As the philanthropic arm of the American Society of Mechanical Engineers, the ASME Foundation funds programs that empower next generation engineers.

ASME, founded in 1880 as a professional community for engineers, sets the global standards for excellence and public safety across mechanical engineering and related disciplines.

The Society's people, programs, forums, conferences, research and rich digital ecosystem accelerate cutting-edge engineering innovations for the greater good.



**FOR 140 YEARS,
ADVANCING ENGINEERING FOR
THE BENEFIT OF HUMANITY.**

Advanced Manufacturing

Additive Manufacturing
Industry 4.0

Bioengineering

Cellular Manufacturing
Biologics
Tissue Engineering

Pressure Technology

Design
Materials
Fab Inspection
Operation Commissioning
Maintenance

Clean Energy

Solar
Wind
Biomass Storage
Nuclear

Robotics

Industrial Automation
UAVs
Field
Mobile
Autonomous

Climate change, clean water, hunger, and disease are among the many urgent threats confronting our world. These are engineering problems.

Engineers can provide the sustainable solutions we need, but only if we harness the talent of the full diversity of humanity.

EQUITY AND SUSTAINABILITY

CAN'T WAIT.

*With the right support,
the possibilities are infinite.*

The ASME Foundation's Campaign for Next Generation Engineers supports powerful programs that foster equity in engineering and advance life-changing, sustainable innovation.

ASME'S BREAKTHROUGH APPROACH

From early inspiration to world-changing innovation

EDUCATION

THAT INSPIRES

Igniting a lifelong passion for engineering in K-12 through college and graduate school

CAREERS

THAT MATTER

Propelling early-career engineers toward a lifetime of meaningful work and engagement

IDEAS

THAT INNOVATE

Nurturing groundbreaking ideas to improve quality of life in underserved communities



EDUCATION

THAT INSPIRES



INTRODUCING K-12 TO THE WONDERS OF ENGINEERING

EDUCATION
THAT INSPIRES

Illuminating the “E” in STEM for all students



ENGINEERING DREAMS

Reaching more than 635,000 students annually through an alliance with Discovery Education, delivering engineering-related STEM curriculum.

DropMEin!

Classroom visits, both virtual and in-person, by professional engineers who open young minds to all the ways engineers can build a better world.

Engineering is the only STEM discipline not typically included in the K-12 curriculum

68% of participating schools are Title I qualified; the program champions more inclusive, better prepared K-12 students energized to pursue STEM

ASME FOUNDATION SCHOLARSHIPS

Making an engineering education possible

EDUCATION
THAT INSPIRES

It is impossible to know how many would-be engineers will never have had the chance to realize their potential because they could not afford an engineering education.

ASME Foundation Scholarships address the college funding gap for the most deserving students in the U.S. and abroad.

In the U.S., among engineers with college degrees, less than 15% are women and less than 14% are individuals from minority groups long underrepresented in the profession.

THE ASME FOUNDATION AWARDS NEARLY

45%

OF ITS SCHOLARSHIPS TO STUDENTS
OF COLOR AND

40%

TO FEMALE STUDENTS BASED ON
FINANCIAL NEED.

ASME E-FESTS®

Innovate. Create. Compete. Celebrate.

EDUCATION
THAT INSPIRES

Where engineering students
*Invent
and Advance*



ASME E-FEST DIGITAL®

Virtual, global outreach events that offer challenging competitions, skill-building workshops, and networking opportunities for college-age students.

The thousands of students who participate each year learn from experts, engage in team-based engineering design competitions, and build their technical skills. They begin to create a professional network by connecting with industry representatives and have a forum to demonstrate their passion and competence to potential employers, many of whom look to E-Fests as recruitment opportunities.

ASME EFX®

An EFX version enables any engineering school in the world to host its own localized E-Fest event.

EFx also presents sponsorship opportunities for industry partners who seek to develop and support the local engineering workforce.

ASME E-FEST CAREERS

A virtual career development event attracting up to 5,000 students and early-career engineers; features sessions on interviewing, networking, optimization of LinkedIn, resume writing, and technical skill-building. Best-in-class employers use E-Fest Careers to recruit next-generation talent.

CAREERS

THAT MATTER



HBCU ENGINEERING PATHWAYS

Enabling access to engineering careers

ASME collaborates with HBCUs to:

- ▶ Help administrators and faculty align engineering curriculum more closely with market needs
- ▶ Connect students to mentors, scholarships, internships, apprenticeships, and jobs with best-in-class organizations and companies
- ▶ Establish ASME student chapters with access to ASME events, competitions that provide hands-on learning, and opportunities to volunteer
- ▶ Enable participation in ASME's member network on regional, national and global levels
- ▶ Illuminate potential career pathways via FutureME, a new ASME digital career engagement platform



ASMECCEP

Community College Engineering Pathways

CAREERS

THAT MATTER

ASME'S GAME-CHANGING INITIATIVE WITH COMMUNITY COLLEGES CREATES NEW CAREER PATHWAYS FOR SKILLED TECHNICAL WORKERS WITH TWO-YEAR DEGREES OR OTHER CERTIFICATIONS.



ALIGNING

community college curriculum with rapidly changing technology



BUILDING

community college resources for career development support



CULTIVATING

an employer network accessible to community college students



FUTUREME

A World of Professional Possibility

CAREERS

THAT MATTER

A CAREER DEVELOPMENT DIGITAL PLATFORM FOR STUDENTS AND EARLY CAREER ENGINEERS



ACCESS TO OPPORTUNITIES

Links to jobs, training, certifications, conferences, internships, fellowships, and scholarships



PROFESSIONAL NETWORKING

Connects early-career engineers and technicians with mentors, peers, and ASME experts worldwide



DYNAMIC ROADMAPS

Provides a view into the evolution of job types and the skills and credentials needed to advance and stay market relevant



JOB MARKET INTELLIGENCE

Presents global employment and workforce data searchable by discipline, experience, and location

The background of the top half of the page is a photograph of the U.S. Capitol building in Washington, D.C., featuring its iconic dome and neoclassical architecture. The image is partially obscured by a blue gradient overlay.

ASME FELLOWSHIPS

Policy. Advising. Teaching.

FEDERAL GOVERNMENT FELLOWS

provide non-partisan technical expertise to policymakers in the U.S. Congress, the White House, and federal agencies, advising on energy, manufacturing, infrastructure, and technology

GRADUATE TEACHING FELLOWS

are outstanding doctoral candidates in mechanical engineering who are pursuing careers as engineering educators. Fellowships are awarded with a focus on women and underrepresented minorities

HONORS & AWARDS

Celebrating excellence in engineering

CAREERS

THAT MATTER



SPACEX

PRESIDENT OF SPACEX **GWYNNE SHOTWELL**

NASA

NASA ENGINEER **DR. APRILLE ERICSSON**

Gwynne Shotwell, president and chief operating officer of SpaceX, and Dr. Aprille Ericsson, new business lead for the NASA Goddard Space Flight Center Instrument Systems and Technology Division, are both recipients of ASME's Ralph Coats Roe Medal recognizing outstanding contributions toward a better public understanding and appreciation of the engineer's worth to contemporary society.

IDEAS

THAT INNOVATE



ASME ENGINEERING *for* CHANGE

*The global initiative
to engineer a sustainable world*

ONE MILLION+

USING [ENGINEERINGFORCHANGE.ORG](https://www.engineeringforchange.org)
FOR RESEARCH, TRAINING, AND COLLABORATION

CHANGING MINDS. CHANGING LIVES.

- ▶ Engages the global engineering community around critical sustainable development goals
- ▶ Opens minds to think differently, transforming how and where sustainable engineering is done

KNOWLEDGE HUB

- ▶ Cutting-edge technology
- ▶ Thought leadership
- ▶ Actionable research
- ▶ Training, webinars, networking

IMPACT PROJECTS

- ▶ Fellowships
- ▶ Network of expert advisors
- ▶ Solutions library of emerging technologies

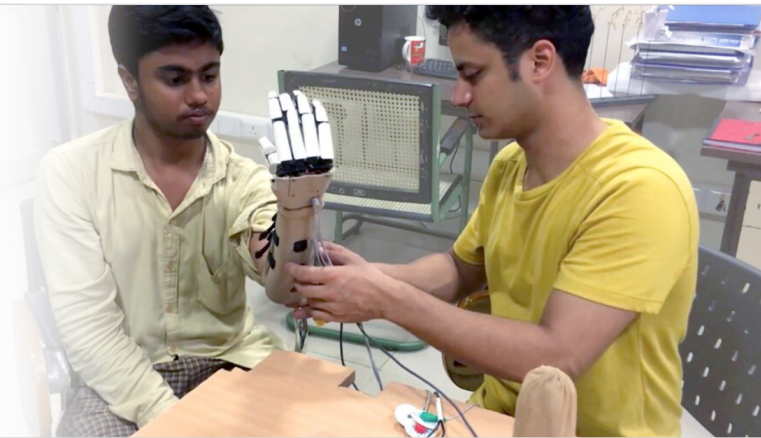
E4C FELLOWSHIPS

Impact Projects Advancing Sustainability

IDEAS
THAT INNOVATE

UP TO 50 **ENGINEERING FOR CHANGE (E4C) FELLOWSHIPS**

are awarded each year to engineering students and early-career engineers—more than half of them women—exploring solutions to the United Nations Sustainable Development Goals



THEIR SIX-MONTH **IMPACT PROJECTS**

are fully documented in the *E4C Solutions Library*, an open-access resource for the global innovation community

WWW.ENGINEERINGFORCHANGE.ORG

ASME IDEA LAB ASME ISHOW

IDEAS
THAT INNOVATE

From Brilliant Ideas to Sustainable Solutions

- ▶ Providing technical expertise, seed capital, and business insight to early-stage social entrepreneurs
- ▶ Realizing the vision of high-potential new products, bringing them from concept to prototype (Idea Lab) and from prototype to product launch (ISHOW)

Over
\$1 Million
IN SEED CAPITAL AWARDED

INNOVATIONS BENEFITTING

31 Countries
AND COUNTING



The ASME Foundation's

CAMPAIGN FOR

NEXT GENERATION ENGINEERS

DIVERSITY, EQUITY,
AND INCLUSION IN THE
ENGINEERING PROFESSION.

EQUITABLE ACCESS TO LIFE-
CHANGING, SUSTAINABLE
SOLUTIONS.



A \$50 MILLION

CAMPAIGN WHERE YOUR DONATION IS
INVESTED IN POWERFUL PROGRAMS THAT
ENABLE THIS TRANSFORMATION.

Meet Our

CAMPAIGN CABINET

KEITH ROE, P.E.

Chair, ASME Philanthropy Committee & Campaign Cabinet; Chairman & CEO, Burns & Roe Enterprises (retired)

KENNETH R. BALKEY, P.E.

Member, ASME Philanthropy Committee; Senior Executive, Westinghouse (retired)

MICHELLE BLAISE

SVP, ComEd, an Exelon Company

GWENDOLYN BOYD, PhD

Former President, Alabama State University; Johns Hopkins University, Applied Physics Lab (retired)

CAROL DAHL, PhD

Executive Director, The Lemelson Foundation

BOB HAUCK

Healthcare Chief Mechanical Engineer, GE (retired)

WILLIAM MAGWOOD, IV

Former Commissioner, United States Nuclear Regulatory Commission

CHANDRAKANT PATEL, P.E.

Chief Engineer and Senior Fellow, HP

THOMAS PESTORIUS

Member, ASME Philanthropy Committee; President & CEO, H&P Incorporated (retired)

GWYNNE SHOTWELL

President, SpaceX

TERRY E. SHOUP, P.E.

Professor Emeritus of Mechanical Engineering, Santa Clara University; Member, ASME Philanthropy Committee

JEAN ZU, PhD

Dean of the Schaefer School of Engineering and Science, Stevens Institute of Technology

Some of Our

SUPPORTERS & COLLABORATORS

WE PARTNER WITH FUNDERS,
SPONSORS, COLLABORATORS,
AND SUPPORTERS TO ADVANCE
ENGINEERING FOR THE BENEFIT
OF HUMANITY.



The work we do would not be possible without the support of more than 7,000 individual donors

*Campaign for Next Generation Engineers
Who Transform the World*

AN EQUITABLE,
SUSTAINABLE FUTURE
IS POSSIBLE.
HELP US BUILD IT.

THE ASME FOUNDATION INVITES
INDIVIDUAL, CORPORATE, AND
INSTITUTIONAL DONORS TO
INSPIRE AND ADVANCE THE NEXT
GENERATION OF ENGINEERS AS
THEY BUILD A BETTER FUTURE
FOR US ALL.

CONNECT WITH US

STEPHANIE VIOLA

MANAGING DIRECTOR,
PHILANTHROPY

EXECUTIVE DIRECTOR,
ASME FOUNDATION

TEL 1.212.591.7155

VIOLAS@ASME.ORG

KEITH MILES

DIRECTOR,
MAJOR GIFTS

TEL 1.202.785.7384

MILESK@ASME.ORG



ASME FOUNDATION

TWO PARK AVENUE, 7TH FLOOR
NEW YORK, NY 10016-5990

**ASME FOUNDATION
WASHINGTON CENTER**

1828 L ST. N.W.
SUITE 510
WASHINGTON, DC 20036-5104

ASMEFOUNDATION.ORG