

ASME FOUNDATION'S
YEAR ONE MILESTONES

ENGINEERING. CHANGES. EVERYTHING.



In a year marked by a global pandemic, economic disruption, and growing awareness of social inequities, the ASME Foundation is grateful to the nearly 6,000 corporations, individuals, and foundations who stepped up to support ASME's philanthropic programs funded by the Campaign For Next Generation Engineers.

There's still time to make a difference—for our campaign and for the next generation engineers who depend on it—before Year One concludes on June 30.

HERE ARE SOME OF THE WAYS ASME FOUNDATION DONORS
MADE A DIFFERENCE IN FY2021

EDUCATION THAT
INSPIRES



Created an alliance with Discovery Education (DE) to deliver engineering-related STEM curriculum to up to 750,000 K-12 students annually.

Joined Boeing, Microsoft, Chevron, and P&G as the engineering content anchor in the STEM Careers Coalition™.

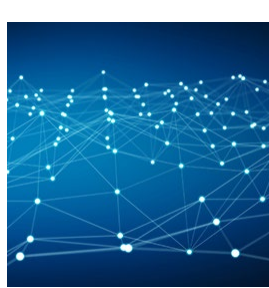
Nearly doubled the number of K-12 students introduced to the E in STEM—from 91,000 students in FY20 to 165,000+ in FY21.

Launched Drop-ME-In!, where ASME volunteer engineers shared the wonders of engineering with approximately 500 K-12 STEM students in FY21.

Increased the value of ASME Foundation Scholarships by 19% over the prior year, and increased our Diversity Ratio to 50%.

Pivoted to 100% digital E-Fest experiences, reaching over 3,000 students from 40+ countries, and added a pilot high school track to E-Fest Digital 2021.

CAREERS THAT
MATTER



Thanks to a generous donation from the **Autodesk Foundation**, we **doubled the number of Engineering4Change Fellowships from 25 to 50**.

Initiated development of the Career Engagement Center, providing a digital platform for aspiring and early-career engineers to recognize and realize their full potential.

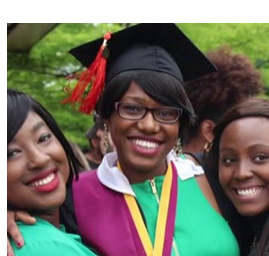
IDEAS THAT
INNOVATE



With support from Siemens USA, launched the INNOVATE FOR IMPACT: Siemens Design Challenge to cultivate solutions to two of the UN Sustainable Development Goals.

With support from The Lemelson Foundation, pivoted ASME ISHOW to 100% digital and named 3 winners from 24 finalists selected from 300+ entrants, all solving critical quality-of-life challenges in underserved communities.

DIVERSITY,
EQUITY,
AND
INCLUSION



Held our first **Increasing Women in Mechanical Engineering** conference, attracting nearly 500 participants.

Awarded 103 scholarships, 50% to women and those who are underrepresented in the engineering profession.

Awarded half of all E4C Research Fellowships to women engineers.

Presented the first annual Lakshmi Singh Early Career Leadership Award recognizing an early-career woman engineer who has demonstrated leadership in, commitment to, and continued service with ASME.

BUT THIS SUCCESS ONLY BEGINS TO MATCH OUR AMBITIONS.
THERE IS SO MUCH MORE TO DO.

WE IMAGINE
A FUTURE WHERE...

Every K-12 student is introduced to the possibilities of an engineering career.

New pathways to rewarding STEM jobs are available to all who seek them, regardless of background.

The urgent needs of the marketplace are filled by qualified technical talent.

No great idea to improve quality of life is left behind.

What makes all this possible are ASME's unparalleled engineering expertise, vast global network, and impactful philanthropic programs. And you.

Engineers Build the Future.

Help Us *Build Theirs.*

DONATE TODAY ›



LEARN MORE
ABOUT ASME FOUNDATION